



I. MUNICIPALIDAD DE CONCEPCION

ILUSTRE MUNICIPALIDAD DE CONCEPCION

ASESORIA URBANA

13° MODIFICACION PLAN REGULADOR EN LO REFERIDO AL TEXTO INCORPORADO POR RESOLUCION N° 144 DE FECHA 17 DE OCTUBRE DE 200 DEL GOBIERNO REGIONAL REGION DEL BIO BIO

PROYECTO DE PLAN REGULADOR DE CONCEPCION... (Detailed project description text)

SEÑOR ALCAIDE... (Official stamp and signature area)

INFORME SECRETARIA REGIONAL MINISTERIAL DE VIVIENDA Y URBANISMO, REGION DEL BIO BIO

SEÑOR ALCAIDE... (Official stamp and signature area)

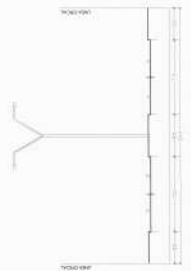
AGENCIA COMPROBANTE DE BIENES RAICES DE CONCEPCION... (Official stamp)

LAMINA 9 PERFILES VIALES

ORIGINAL

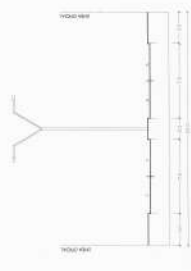
13° MPRC 2017 9 de 11

TEMSTOCLES ROJAS (ZANARE) / COSTANERA CARDENAL (S.S.H.)



Corte P-4a

AV. ZANARE (AV. CENTRAL NORTE) / EMBALDA



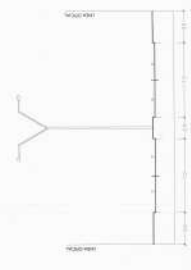
Corte P-3c

AV. ZANARE (ZANARE) / AV. CENTRAL NORTE



Corte P-3b

AVENIDA ZANARE (TEMSTOCLES ROJAS) / AVANCIADA



Corte P-3a

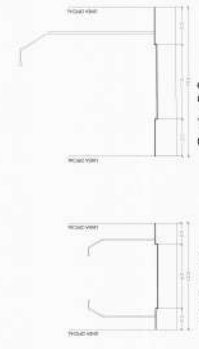
GARRITON (TEMSTOCLES ROJAS/INMUELS)

ERRAZURIZ MARIU FONENTE FERRER FONENTE

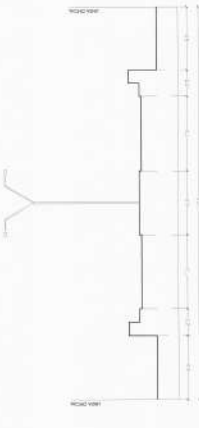
EMBALDA

AVENIDA LOS CARRERA FONENTE

TEMSTOCLES ROJAS (GARRITON / ZANARE) TEMSTOCLES ROJAS NORTE (ZANARE) / JAVIER RODRIGUEZ



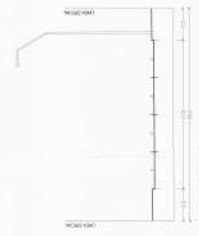
Corte P-8



Corte P-7



Corte P-5



Corte P-4b

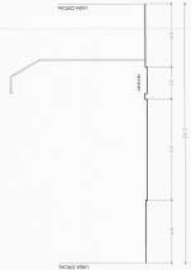
OTICICAS FONENTE (PADRE HUMADO) / AV. COSTANERA CARDENAL (E.S.H.)

FERRER FONENTE

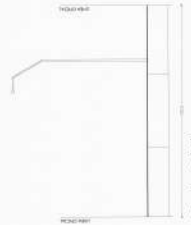
AV. CENTRAL NORTE AV. CENTRAL SUR BICENTENARIO (AVDA. ZANARE) / COSTANERA CARDENAL (S.S.H.)

ELBAO ELUIERKO RAMIREZ COCHRANE FONENTE

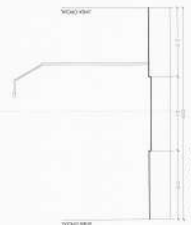
PACIFICAL BIRIBELAS LAS HERAS FONENTE SAN MARIN FONENTE



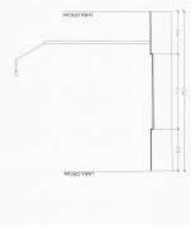
Corte P-12



Corte P-11b



Corte P-11



Corte P-10b



Corte P-10

ORIGINAL